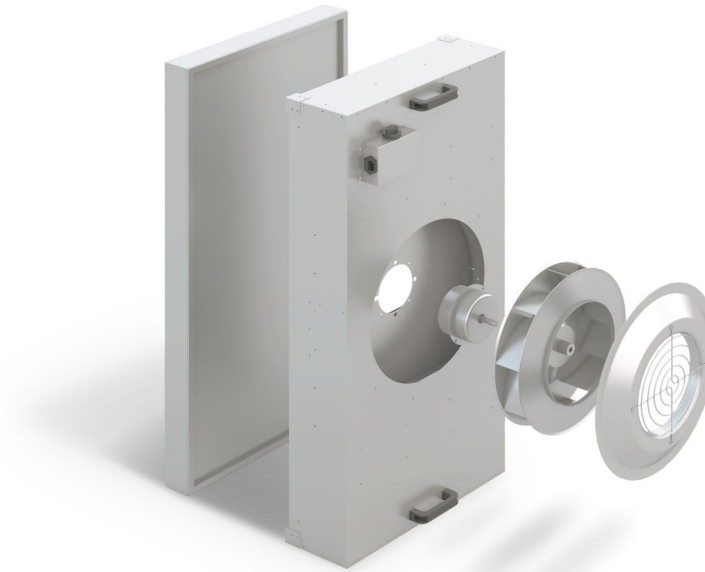
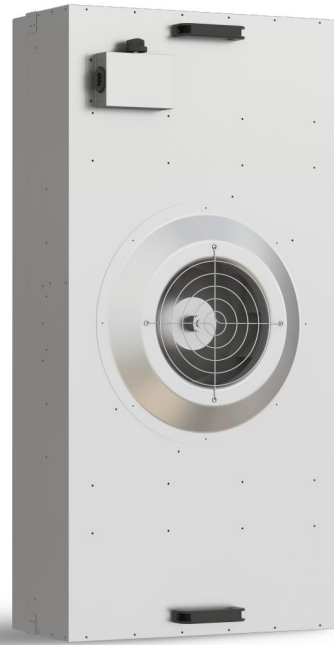


1-9 FFU

Product Description

FFU is abbreviation of Fan Filter Unit. It is a modular terminal air supply device with its own power and filtering effect. Its main function is to inhale the air from the top of the FFU by the fan and filter it by HEPA, and the filtered clean air is evenly sent out at the air velocity of 0.45m/s+20% on the entire air outlet surface to meet the cleanliness requirements of the clean environment. It is mainly installed on ceiling keels and equipment machines in clean areas and working areas. It is widely used in semiconductors, optical electronics, precision instruments, biopharmaceuticals, aerospace, and automobiles, hospitals, food, spraying, printing and other fields.



Material Classification

Aluminium zinc plate
Stainless steel plate
Aluminum alloy plate
Powder coating steel



Rotor Classification

Internal rotor fan
External rotor fan

Current Classification

AC fan
EC fan
DC fan



System Classification

AC in-situ control
AC PC control system
EC PC control system
DC PC control system



Filter Level Classification

99.95%@0.3μm (H13)
99.995%@0.3μm (H14)
99.9995%@0.12μm (U15)
99.99995%@0.12μm (U16)

FFU Features



Negative pressure ventilation

Because of its ability to provide static pressure, the clean room is positive pressure relative to the outside world. Therefore, external particles are not subject to leakage into the clean area, makes sealing easy and safe.



Save space

Compared to other systems, FFU system occupies less floor height in the supply air plenum. And basically does not occupy the clean room space.



Shorten construction period

Using FFU saves the production and installation of air ducts. Shorten the construction period.



Reduce operating costs

Although when choosing FFU, the initial investment is higher than using duct ventilation. However, in the later operation, it prominently shows the characteristics of energy saving and maintenance-free.



Convenient and fast control

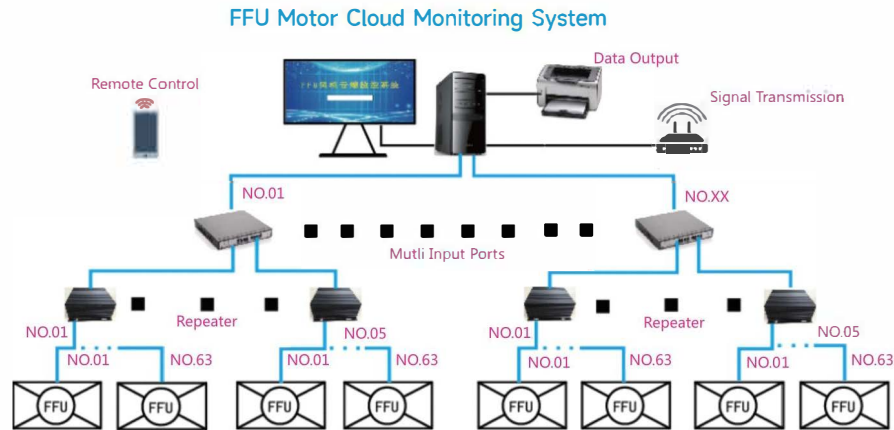
Remote and precise control of single or group FFU. And it is not affected by other pipe network systems.



It is flexible and easy to replace, install and move

FFU is self-powered and self-contained modular. The matching hepa filter is easy to replace, so it is not restricted by the region: In the clean workshop, it can be installed, replaced and moved according to the needs, and it can be controlled by separated zone.

AC/EC Group Control



Group Control Features

The system is easy to operate, can monitor the FFU on the computer and touch screen, has strong anti-interference and low construction cost. The system is designed based on 485 bus and adopts hierarchical control. The system can control up to 64516 units, which can be precisely controlled according to the customer's on-site FFU layout.

The FFU can work independently during PC and PLC standby

Supply Power: AC 1N 110,220V/50,60Hz

Control Function: Can control single or group FFU A. Start B. Stop C.Regulation

Monitoring Function: Can monitor single or group FFU A. Working Status B. Error Alarm

Product Name	AC FFU			
Product Model	YN-FFU-A01	YN-FFU-A02	YN-FFU-A03	YN-FFU-A04
Dimension(mm)	575x575x220	575x1175x220	875x1175x275	1175x1175x295
Filter Dimension(mm)	570x570x69	570x1170x69	870x1170x69	1170x1170x69
Air Volume	500m ³ /h	1000m ³ /h	1500m ³ /h	2000m ³ /h
Noise	52-62dB(A)	52-62dB(A)	52-62dB(A)	52-62dB(A)
Air Pressure	200PA	200PA	260PA	290PA
Power	170W	170W	200W	240W
Weight	28Kg	35Kg	47Kg	55Kg
Material	Galvanized/powder coated/SUS 304 plate			
Supply Power	AC 1N 110, 220V/50,60Hz			
Control System	3 stage regulation, group regulation			
Filter Efficiency	99.95%MPPS above H13-U16@EN1822			
Pre Filter	G3/G4 Filter, nylon filter			
Work Status	power indicator, work indicator, Error indicator			
Connection Type	3 Pin Aviation Male Female socket, terminat blocks			
Overload Protection	Overload protect of motor and controller			
Monitor Contact Communication Method	port of reserve and Erro			

Product Name	EC FFU			
Product Model	YN-FFU-E01	YN-FFU-E02	YN-FFU-E03	YN-FFU-E04
Dimension(mm)	575x575x275	575x1175x275	875x1175x305	1175x1175x305
Filter Dimension(mm)	570x570x69	570x1170x69	870x1170x69	1170x1170x69
Air Volume	500m ³ /h	1000m ³ /h	1500m ³ /h	2000m ³ /h
Noise	48-54dB(A)	48-54dB(A)	52-58dB(A)	52-58dB(A)
Air Pressure	210PA	210PA	280PA	280PA
Power	60W	90W	140W	160W
Weight	28Kg	35Kg	47Kg	55Kg
Material	Galvanized/powder coated/SUS 304 plate			
Supply Power	EC 1N 220V/50,60Hz			
Control System	Manual stepless regulation; PC group regulation			
Filter Efficiency	99.95%MPPS above H13-U16@EN1822			
Pre Filter	G3/G4 Filter, nylon filter			
Work Status	Work indication; Error indication			
Connection Type	Terminal Bolcks			
Overload Protection	Overload protect of motor and controller			
Monitor Contact Communication Method	R485 TCP			

Notic: Pressure deviation range:±5%

FFU test standard base on: IEST-CC00361-2014, GBT1388-2012, GBT1235-20000, GB9068-1988

Noise value is 1.5m below the air outlet of the filter

Above data is laboratory test value, deviation value depend on site situation

can customized according to client's requirements